

FireWatch: Community Wildfire Risk Mitigation

Project Partners: Rancho
Santa Fe Association Parks
and Recreation Department
and FireWatch



FireWatch

Community Wildfire Risk Mitigation



A new service developed by:

Richard McCreight

&

Gus Calderon



AirSpace Consulting



About Us

Richard McCreight

- Founded NEOS, Ltd. after working for NASA
- Over 25 years of aerial imaging experience
- Documented countless natural disasters
- USFS Helitack and Hotshot team member
- Research scientist at the USFS Fire Science Lab

Gus Calderon

- FAA Commercial Pilot
- Founded Airspace Consulting
- FAA Remote Pilot in Command
- Aerial imaging with aircraft and drones

Problem

- California wildfires are increasing at an alarming rate.
- Warmer, drier climates are causing more frequent and larger firestorms.
- Communities are experiencing escalating human and economic costs.
- Non-compliance is the reason that efforts to create defensible space around homes have had limited success.

Case Study: Rancho Bernardo Trails Community Witch Creek Wildfire – October 2007



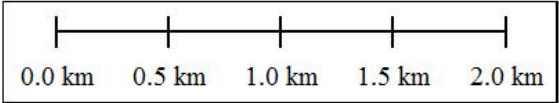
Rancho Bernardo Wildfire Damage

Aerial Map – October 2007



NEOS, Ltd 27 Oct 2007

Resolution = 6 inches



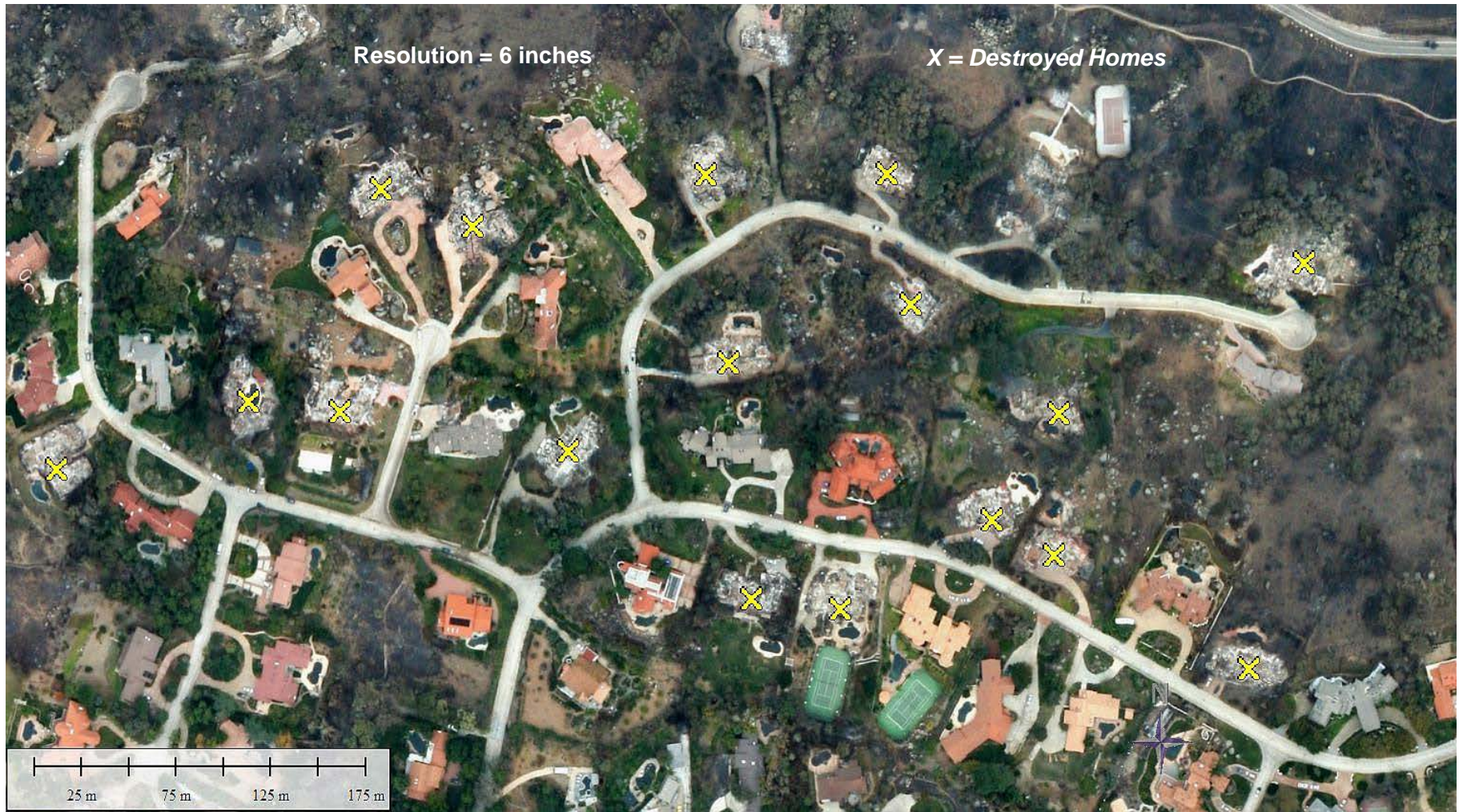
Rancho Bernardo Trails Community

Wildfire Damage - October 2007



RB Trails Community - Fire Impacts

Enlarged Image Map - October 2007



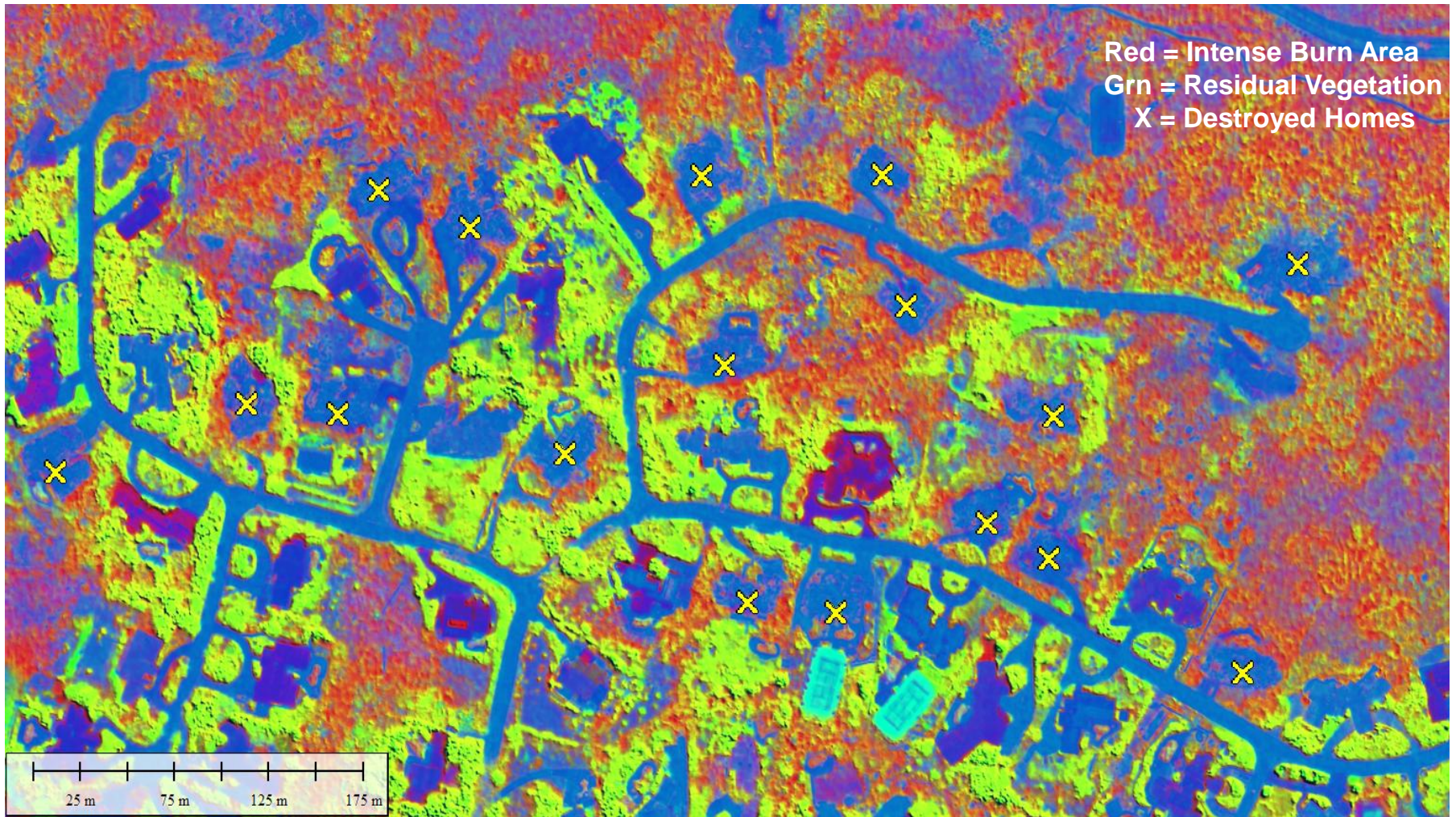
RB Trails Community Pre-Fire Vegetation

Image Map 2005



RB Trails Community - Fire Intensity Map

Color Image Enhancement – October 2007



RB Trails Community Re-vegetation

August 2018

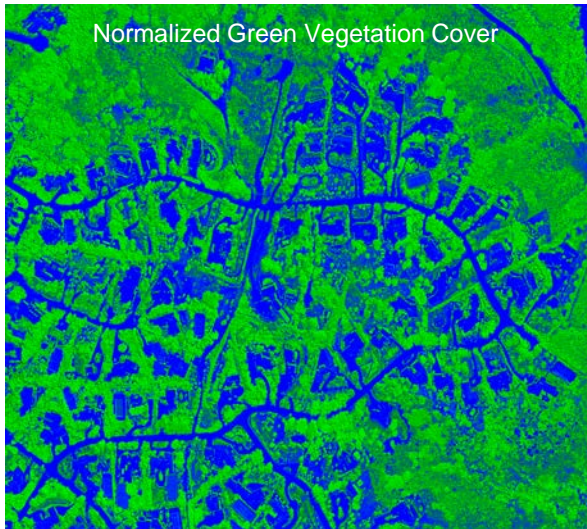


NEOS, Ltd & ASC 2018

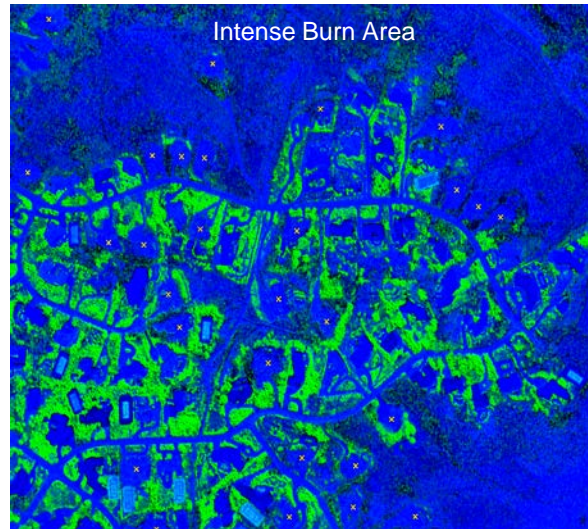


Rancho Bernardo Trails Community - Key Findings

2005: Pre-Fire



2007: Fire Impact



2018: Recovery



- The Witch Creek wildfire devastated more than 70 homes in the Trails Community.
- The majority of homeowners failed to clear vegetation near homes for defensible space.
- Vegetative fuel near structures was the greatest predictor of property destruction.

A stylized flame icon in shades of orange and yellow, positioned behind the letter 'W' in the text 'FIREWATCH'.

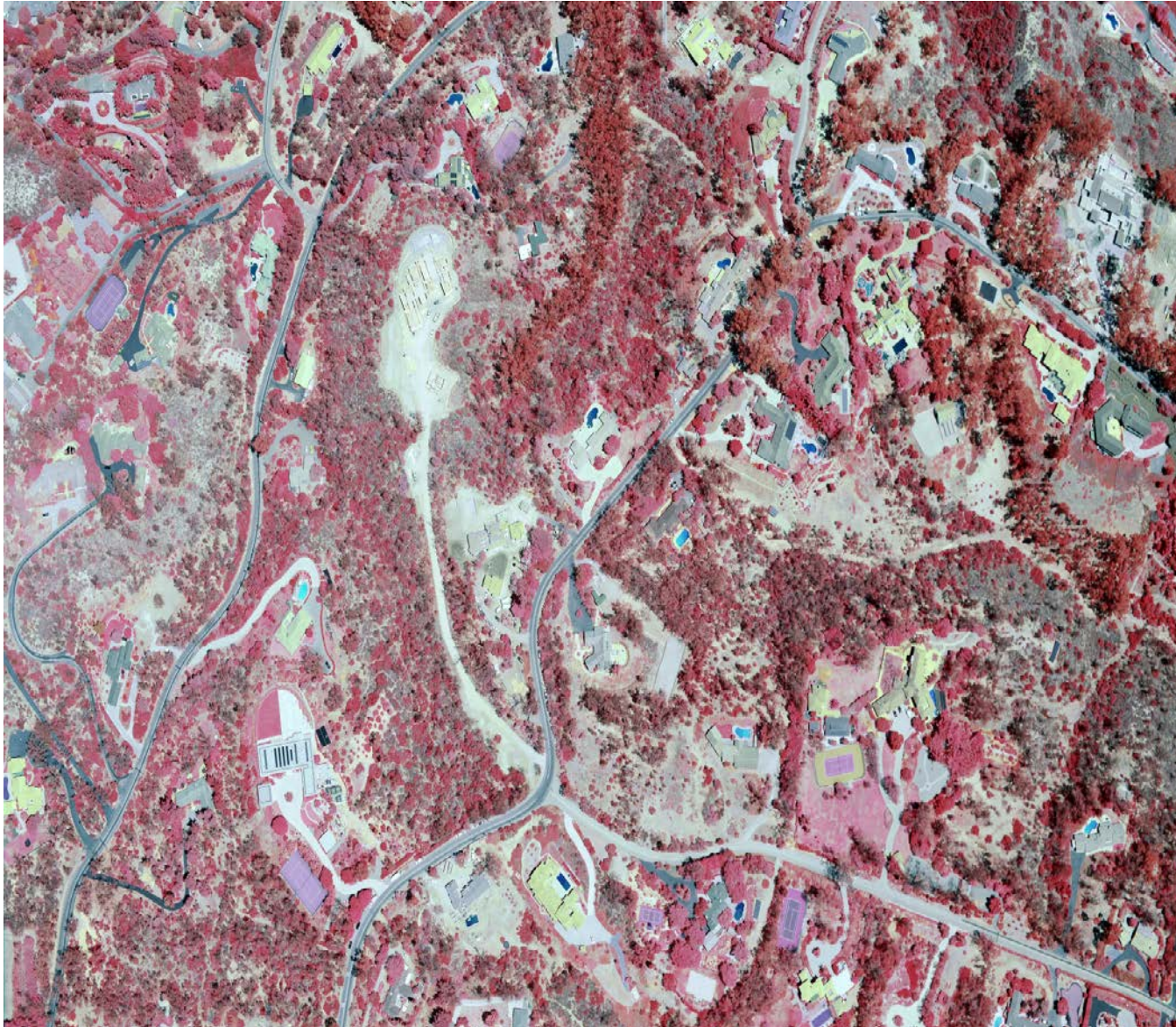
FIREWATCH

- A new service developed to empower communities to manage wildfire risk.
- High-risk zone identification from aerial images before the onset of wildfires.
- Decreasing wildfire risk protects lives and property and may reduce insurance liability.

Aerial Image – Rancho Santa Fe Golf Course



Color Infrared Image – Highlighting Vegetation



Color Infrared Aerial Map

Southern Half of Rancho Santa Fe



RSF-S_CIR Ortho_Map Preview
8 Aug 2019



Digital Surface Model

Color Infrared Image shows Vegetation Heights

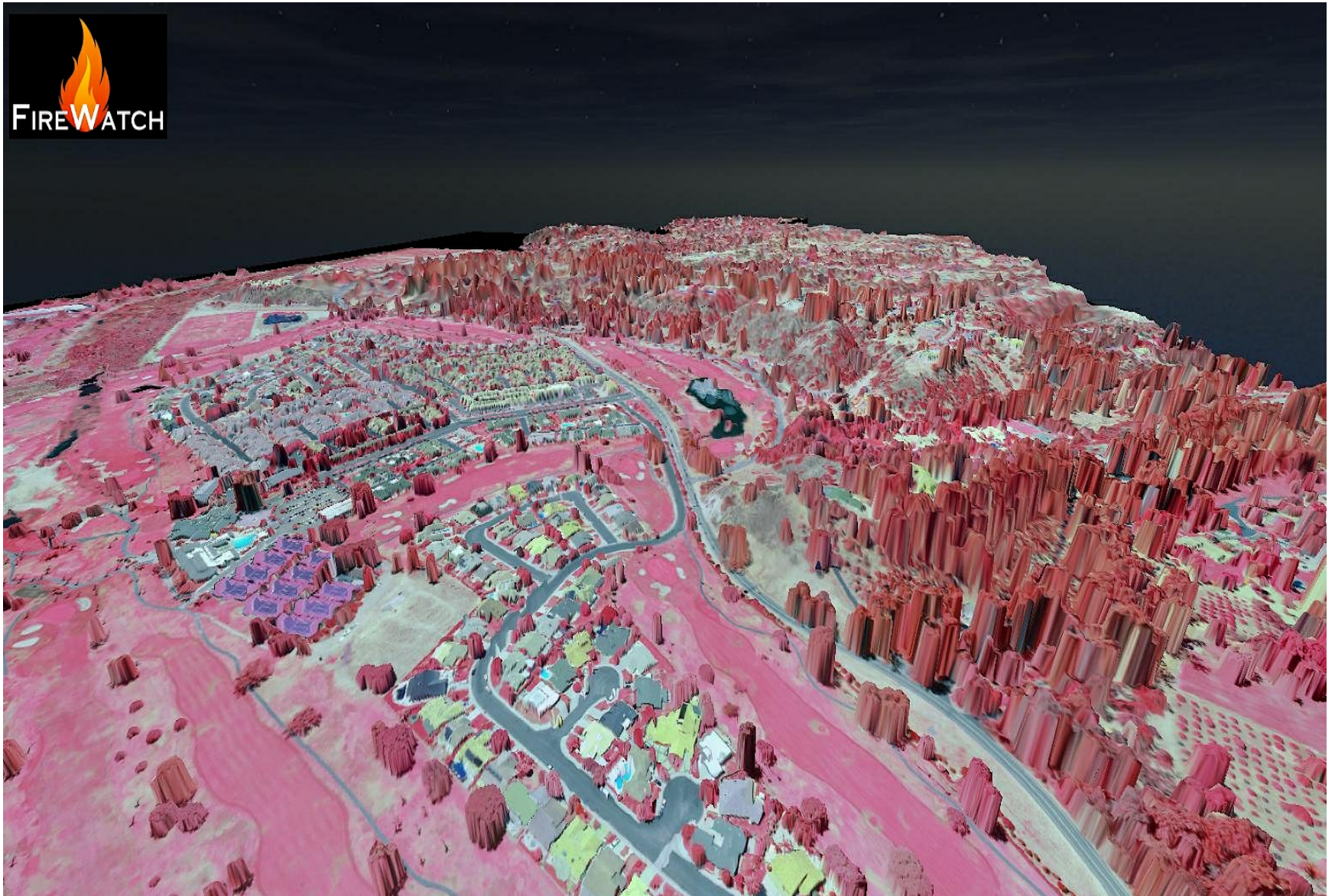


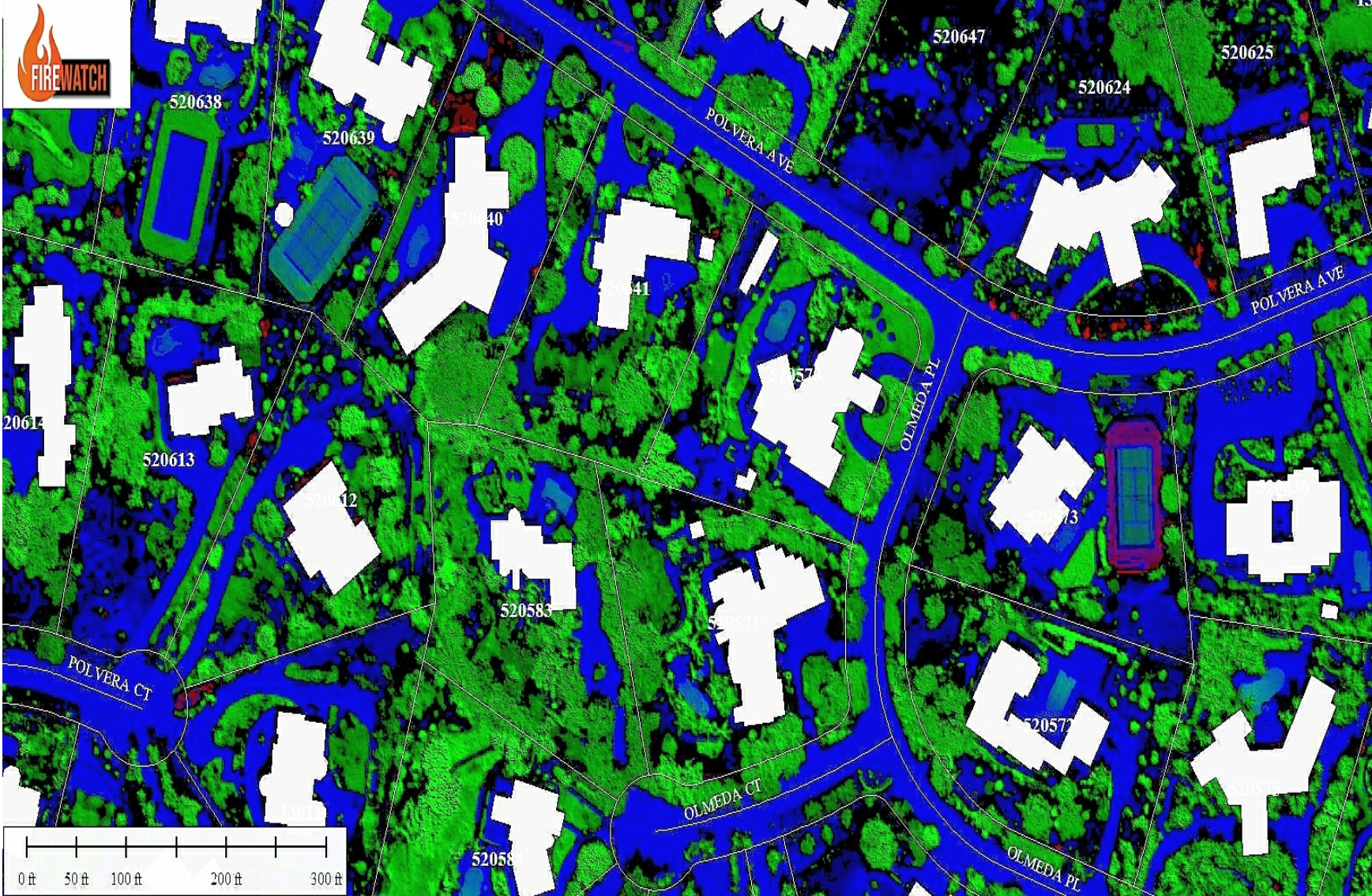
Image Enhancement

Proprietary Algorithms for Analysis



Defensible Space Maps

Actionable Aerial Data



FireWatch is the Solution!

Our Approach:

- Collect multispectral data from an aircraft
- Process and analyze aerial images
- Create vegetative models with proprietary algorithms
- Integrate aerial maps into GIS for a relational database
- Use GPS acquired images over time for change detection



Conclusion

- Recent studies show that vegetation management is the single most important wildfire defense available to homeowners.
- Airborne analysis of the vegetative fuel in the community can provide the fire department and community leaders with actionable data for mitigating the risk of wildfires.

Gus Calderon

gus@airspaceconsulting.com

Richard McCreight

neos500@gmail.com



For questions regarding
this project please contact:

Caitlin Kreutz

Rancho Santa Fe
Association Parks and
Recreation Department
Assistant Manager

858-756-4652 or
Caitlin@rsfassociation.org

